



WEEKLY MARKET INFORMATION REPORT – FOR THE WEEK ENDING THURSDAY OCTOBER 17, 2024

The following information is collected from various sources and disseminated by Beef Farmers of Ontario.

ONTARIO DIRECT TO PACKER RAILGRADE CATTLE TRADE

Prices are on a carcass weight basis before grade and weight discounts:

A Grade Steers	406.00
A Grade Heifers	406.00

ONTARIO LIVE CATTLE TRADE

Ontario auction sales this week saw weighted average price ranges for:

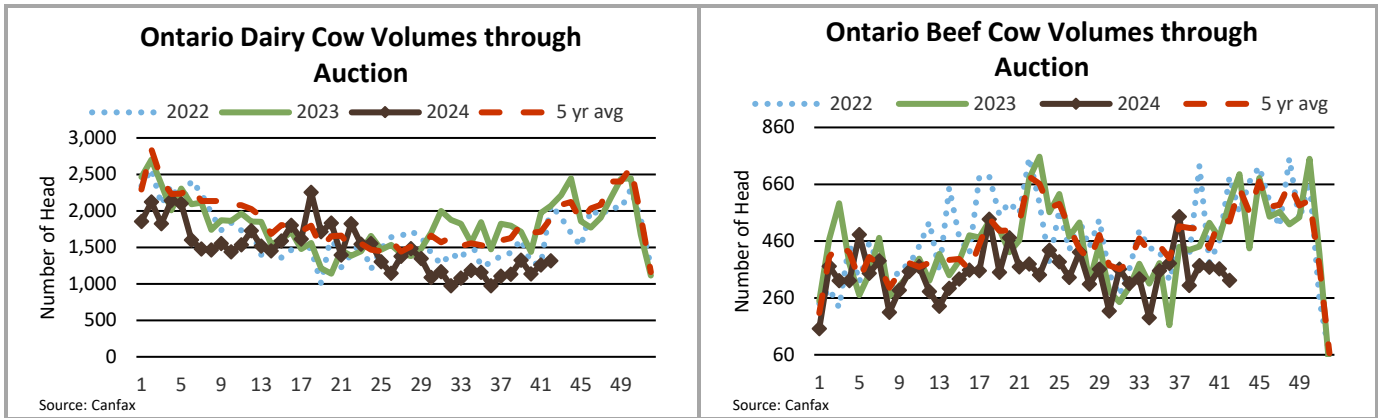
FED CATTLE	Volume	Price Range	Average	Top	Last Week Avg
Large Frame Steers +1250	52	238.14-247.62	243.54	264.50	238.72
Medium Frame Steers +1250	62	231.10-247.10	238.55	267.50	231.62
Large & Medium Frame Steers +1250	112	235.86-250.38	242.46	267.50	236.15
Large Frame Heifers +1000	36	237.00-253.96	245.53	297.50	234.46
Medium Frame Heifers +1000	74	229.77-240.44	234.96	267.00	226.08
Large & Medium Frame Heifers +1000	110	231.20-245.65	238.08	297.50	229.98
Fed steers, Dairy & Dairy Cross +1250	30	213.12-228.18	223.22	231.00	217.46
Fed heifers, Dairy & Dairy Cross +1000	81	167.46-224.90	208.90	233.00	200.26
Cows - All Weights	1636	124.31-180.57	147.71	235.00	143.48
Bulls - All Weights	116	177.71-220.64	200.88	259.99	198.34

STOCKERS - Large and Medium Frame

STEERS	Volume	Price Range	Average	Top	Last Week Avg
1000+	1248	291.32-321.23	305.42	327.75	306.04
900-999	867	314.14-332.40	322.87	349.50	327.65
800-899	382	321.99-350.49	338.01	368.50	329.71
700-799	427	314.03-370.19	349.87	396.50	333.26
600-699	430	311.37-408.08	378.10	441.00	378.26
500-599	570	353.58-459.94	414.42	540.00	404.74
400-499	279	396.11-513.78	462.68	600.00	446.56
-399	89	387.40-598.67	497.39	1200.00	490.71

STOCKERS - Large and Medium Frame

HEIFERS	Volume	Price Range	Average	Top	Last Week Avg
+900	351	262.31-305.33	291.43	318.00	267.25
800-899	298	301.10-326.12	316.19	333.00	303.76
700-799	316	297.53-334.12	317.83	364.99	312.28
600-699	264	284.17-367.79	332.43	401.99	334.61
500-599	399	302.67-411.25	372.91	450.00	368.86
400-499	249	321.01-450.71	397.33	495.00	403.04
300-399	73	377.48-478.78	433.55	575.00	418.03
-299	16	401.09-558.28	498.54	700.00	362.16



At Kawartha Lakes Community Sale Barn: **Oct 12, 2024– 99 cows, 3 fed, 6 bulls, 26 veal, 26 stockers**

	Price Range	Avg.	Top
Cows	127.50-182.50	146.15	235.00
Bulls over 1600 lbs	151.00-218.00	194.78	218.00
Veal Calves 600 lbs plus	217.00-287.50	229.03	287.50
Veal Calves 125 lbs & under	600.00-1025.00	732.08	1025.00

At Denfield Livestock Exchange Inc.: **Oct 15, 2024 – 219 Fed Cattle, 9 Veal, 4 Bulls, 52 Cows, 177 Drop Calves.**

	Price Range	Top
Choice Steers	250.00-257.00	275.00
Good Steers	245.00-250.00	
Choice Heifers	250.00-258.00	267.50
Good Heifer	243.00-250.00	
Good Holstein Veal	260.00-272.00	275.00
Good Beef Cows	166.00-178.00	
Bulls	195.00-227.00	

At Aylmer Stockyards Inc.: **Oct 16, 2024 – 14 Veal, 144 Cows, 45 Fed cattle, 49 Stockers**

	Price Range	Average	Top
Fed Heifers, dairy & dairy cross 1000+ lbs	137.00-233.00	214.99	233.00
Cows	121.99-192.99	151.29	192.99
Veal calves over 600 lb	266.00-307.50	279.19	307.50

ONTARIO STOCKER & FEEDER TRADE

Stocker sale at Brussels Livestock: **Oct 11, 2024 – 1,243 Stockers**

Steers	Price Range	Average	Top	Heifers	Price Range	Average	Top
1000+	274.50-324.25	297.22	327.75				
900-999	300.00-327.00	315.89	335.00	900+	267.00-307.50	293.91	318.00
800-899	319.00-349.00	334.58	350.00	800-899	295.00-329.50	310.72	329.50
700-799	337.00-374.00	357.88	374.00	700-799	283.50-336.00	308.00	336.00
600-699	370.00-397.50	381.14	397.00	600-699	270.00-359.00	325.81	375.00
500-599	402.00-466.00	428.84	466.00	500-599	348.00-408.00	392.88	408.00
400-499	430.00-500.00	470.82	537.00	400-499	350.00-465.00	413.53	465.00

Stocker sale at Keady Livestock Market: **Oct 15, 2024- 640 Stockers**

Steers	Price Range	Average	Top	Heifers	Price Range	Average	Top
1000+	297.00-308.00	301.77	308.00				
900-999	326.00-344.00	335.29	344.00	900+	240.00-280.00	269.17	280.00
800-899	302.50-345.00	337.65	345.00	800-899	287.50-321.00	307.70	321.00
700-799	337.50-377.50	359.63	392.50	700-799	325.00-343.00	333.48	343.00
600-699	375.00-420.00	389.00	420.00	600-699	325.00-370.00	351.24	370.00
500-599	310.00-397.50	366.00	445.00	500-599	310.00-345.00	325.87	365.00
400-499	460.00-500.00	469.87	550.00	400-499	312.50-405.00	373.86	420.00
				300-399	390.00-480.00	446.11	480.00

Stocker sale at **Community Livestock Exchange: Oct 15, 2024: 242 Stockers**

Steers	Price Range	Average	Top	Heifers	Price Range	Average	Top
700-799	200.00-379.99	324.59	379.99	700-799	150.00-297.50	244.09	297.50
600-699	250.00-419.00	367.60	419.00	600-699	300.00-358.00	333.99	358.00
500-599	335.00-487.50	434.10	487.50	500-599	220.00-395.99	361.29	395.99
400-499	300.00-533.90	486.00	533.90	400-499	370.00-459.99	412.00	459.99

Stocker sale at **Renfrew Pontiac Livestock: Oct 15, 2024: 580 Stockers**

Steers	Price Range	Average	Top	Heifers	Price Range	Average	Top
1000+	185.00-279.99	266.69	279.99				
700-799	220.00-381.00	354.00	381.00	700-799	285.00-364.99	325.00	364.99
600-699	260.00-404.99	380.79	404.99	600-699	304.99-401.99	348.30	401.99
500-599	302.49-472.40	402.89	472.40	500-599	250.00-429.99	373.60	429.99
400-499	400.00-529.99	453.30	529.99	400-499	254.99-465.00	392.70	465.00
399-	339.99-526.99	445.60	526.99	300-399	329.99-429.99	370.29	429.99

Stocker sale at **Ontario Livestock Exchange: Oct 16, 2024 - 400 Stockers**

Steers	Price Range	Average	Top	Heifers	Price Range	Average	Top
1000+	285.00-327.00	302.07	327.00				
900-999	310.00-335.00	322.24	335.00	900+			
800-899	337.00-359.00	344.48	359.00	800-899			
700-799	349.50-349.50	349.50	349.50	700-799			

Stocker sale at **Ontario Livestock Exchange: Oct 17, 2024 - 387 Stockers**

Steers	Price Range	Average	Top	Heifers	Price Range	Average	Top
800-899	287.50-317.50	303.84	317.50				
700-799	287.50-330.00	308.64	362.50	700-799	260.00-305.00	291.67	305.00
600-699	200.00-440.00	358.46	440.00	600-699	255.00-330.00	303.95	345.00
500-599	350.00-505.00	424.79	540.00	500-599	255.00-370.00	311.90	450.00
400-499	400.00-550.00	467.58	600.00	400-499	380.00-495.00	434.35	495.00
399-	510.00-660.00	574.12	700.00	300-399	420.00-575.00	504.75	575.00

ONTARIO STOCKER & FEEDER TRADE SPECIAL FALL SALES

Stocker sale at **Keady Livestock Market: Oct 11, 2024 - 1,223 Stockers**

Steers	Price Range	Average	Top	Heifers	Price Range	Average	Top
1000+	309.50-323.50	316.88	323.50				
900-999	318.50-335.00	325.60	349.50	900+	300.50-318.00	310.82	318.00
800-899	341.00-368.50	354.58	368.50	800-899	319.00-333.00	330.26	333.00
700-799	369.00-369.00	369.00	369.00	700-799	337.00-338.00	337.42	338.00
600-699	300.00-370.00	346.67	370.00	600-699	325.00-325.00	325.00	325.00

A good offering of yearling cattle sold steady to Tuesday market.

Stocker sale at **Ontario Stockyards Inc: Oct 15, 2024: 562 Stockers**

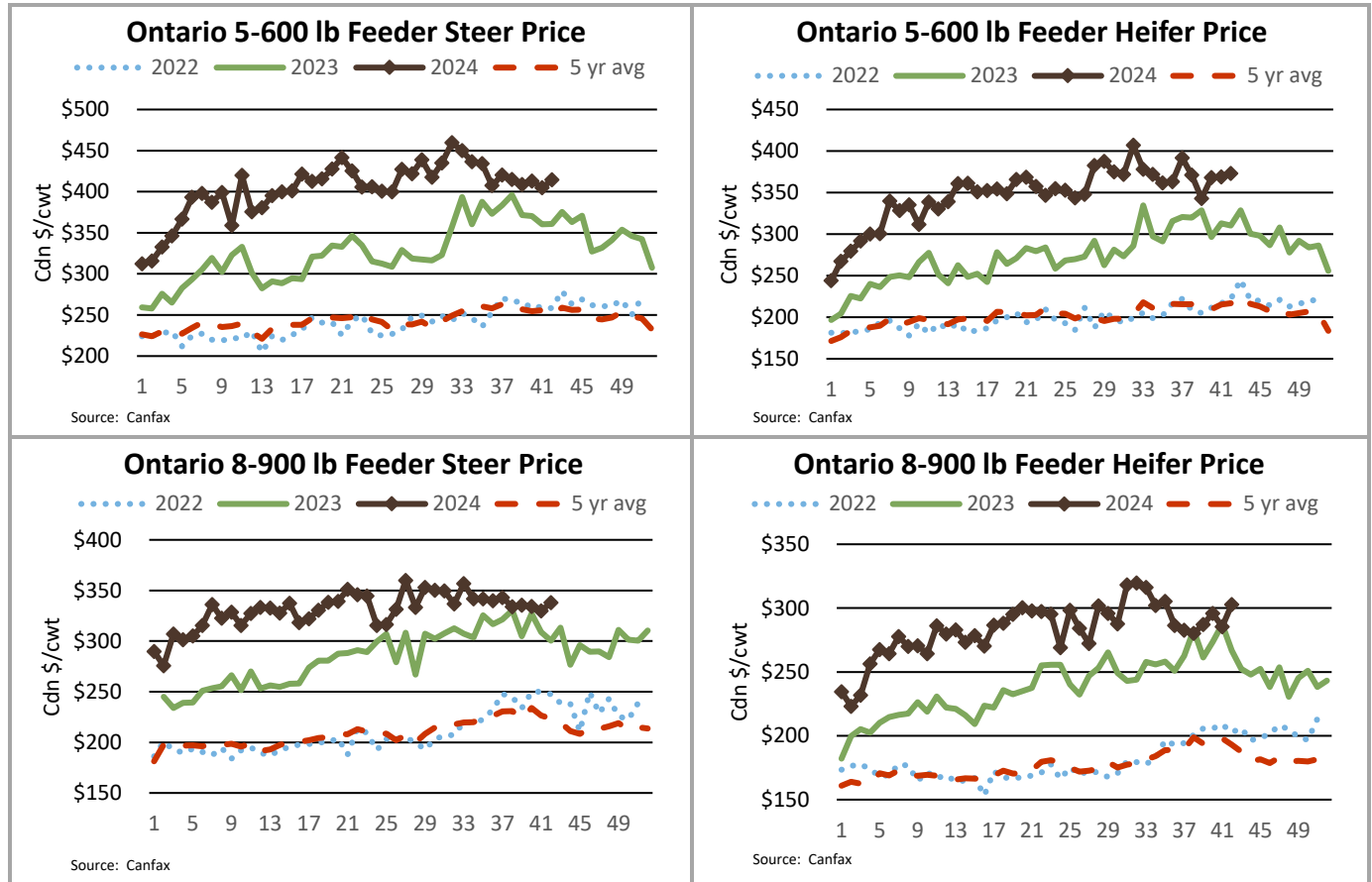
Steers	Price Range	Average	Top	Heifers	Price Range	Average	Top
1000+	300.25-314.50	310.21	314.50				
900-999	317.00-330.00	324.97	332.50	900+	282.50-312.00	300.51	312.00
800-899	335.00-352.00	344.13	356.00	800-899	317.00-329.50	327.70	329.50
700-799	349.00-367.50	362.39	367.50	700-799	305.00-336.00	329.93	336.00
600-699	340.00-385.00	377.89	433.00				

Yearlings sold actively on a strong market with grass cattle fetching premiums.

Stocker sale at Kawartha Lakes Community Sale Barn: **Oct 16, 2024: 671 Stockers**

Steers	Price Range	Average	Top	Heifers	Price Range	Average	Top
900-999	276.00-308.00	283.04	308.00	900+	170.00-302.00	271.43	302.00
700-799	310.00-396.50	346.86	396.50	800-899	235.00-305.00	285.28	305.00
600-699	370.00-427.50	400.71	441.00	700-799	285.00-340.00	309.88	340.00
500-599	385.00-467.50	436.00	490.00	600-699	265.00-392.50	343.15	392.50
400-499	470.00-545.00	502.93	545.00	500-599	352.50-446.00	403.60	449.00
399-	370.00-555.00	463.18	555.00	400-499	325.00-454.00	401.03	454.00
				300-399	340.00-440.00	404.68	440.00

Stockers sold aggressively at strong prices.



WEEKLY LIVE CATTLE EXPORTS - ONTARIO (USDA)

	Week ending Oct 5, 2024	Week ending Sep 28, 2024	Year to Date
Total live slaughter cattle exported through Ontario ports to the U.S.	2,635	2,720	133,826
Steers & Heifers & Cows	2,536	2,626	129,575
Bulls	99	94	4,251

LIVE CATTLE - CANADA (AAFC/USDA)

IMPORTS	Import % change from 2023 YTD	EXPORTS	Export % change from 2023 YTD
Jan 1- Aug 31/2024		Jan 1- Sep 28/24	
Pure bred	2,963 -60%	Processing steers, heifers & cows	419,478 18%
Non-pure bred	196,347 12%	Feeder cattle & calves	114,062 -10%
		Bulls	22,858 -15%

FEDERALLY INSPECTED PROCESSING - Canfax/CBGA

	Week Ending Oct 12, 2024	# of hd change from week ago	YTD	% Change (Week Ago)	% Change (Year Ago)
ONTARIO	10,951	-55	373,278	0%	-14.5%
CANADA	60,276	2,325	2,349,387	4%	-4.3%
Western Processing	47,647	2,261	1,910,776	5%	-2.1%
Eastern Processing	12,629	64	438,611	1%	-12.5%

AVERAGE CARCASS WEIGHTS – Canfax/CBGA

Week ending	CANADA		ONTARIO	
	Steers	Heifers	Steers	Heifers
12-Oct-24	961	864	980	851
05-Oct-24	961	857	981	844
14-Oct-23	958	866	970	831

DOMESTIC BEEF PRODUCTION – CANADA (million pounds) (Canfax/CBGA)

	October 12, 2024	Wk ago chg	YTD	YTD chg
Fed	49.8	4.2%	1,835.0	0.8%
Non-Fed	5.4	-1.1%	254.5	-13.5%
Total	55.1	3.6%	2,089.5	-1.2%

USDA ESTIMATED CATTLE PROCESSING VOLUME

	Week Ending Oct 19, 2024	Previous Week	Year Ago
Grand Total	608,000	586,000	638,000

QUEBEC ELECTRONIC AUCTION MARKET (F.O.B. THE FEEDLOT)

	Price	Change from Last Week
For the week ending October 17, 2024	403.00	N/C

ALBERTA DIRECT TRADE

Alberta's direct trade: for the week ending October 17, 2024

Steers	Live- FOB	N/T	Rail- FOB	400.00-402.50
Heifers	Live- FOB	N/T	Rail- FOB	400.00-403.50

U.S. TRADE (U.S. funds)

The U.S. cash cattle trade: for the week ending October 17, 2024

Choice and Select Steers and Heifers:	Live	186.00-190.00
	Rail	294.00-304.00

U.S. BOXED BEEF CUT-OUT VALUES (U.S. funds)

	Choice 600-900	Select 600-900
Current Five-Day Average	315.95	291.16

CANADIAN BEEF EXPORTS Jan 1 – Aug 31/2024 (AAFC)

	Tonnes	% chg	vol chg		Tonnes	% chg	vol chg
United States	242,255	3%	6,456	Mexico	20,732	-5%	-1,027
Japan	31,489	1%	423	South Korea	10,240	8%	731
Vietnam	7,671	-9%	-788	Total	325,808	2%	6,566

BEEF IMPORTS – CANADA (AAFC)

	Jan 1 – Oct 5, 2024	Last Year Same Time	% Change
United States	76,578	82,204	-7%
Australia	20,658	11,222	84%
New Zealand	18,225	13,330	37%
Uruguay	8,240	7,800	6%
Mexico	9,183	9,477	-3%
Non-CUSMA	54,200	37,034	46%
EU-27 (beef/veal total)	9,837	9,265	6%
Total	196,921	170,332	16%

CHICAGO MERCANTILE EXCHANGE

Closing quotes on futures **today** were as follows:

Live Cattle			Feeder Cattle			Corn		
Oct	187.63	+1.00	Oct	248.33	+1.60	Dec	4.046	-2.0
Dec	187.33	+1.15	Nov	247.60	+1.85	Mar	4.190	-2.2
Feb	188.13	+1.15	Jan	245.50	+2.38	May	4.264	-2.2
Apr	189.05	+1.18	Mar	244.78	+2.33	Jul	4.312	-2.0
Jun	182.40	+0.83	Apr	246.28	+2.03	Sep	4.284	-2.0
Aug	179.98	+0.73	May	247.00	+1.83	Dec	4.352	-2.2

Soybeans			Soft Red Winter Wheat			Canadian \$		
	US \$/bu			US \$/bu				
Nov	9.700	-18.6	Dec	5.726	-16.6	Spot	72.41	-0.05
Jan	9.826	-15.2	Mar	5.924	-17.0	Dec	72.54	-0.06
Mar	9.962	-13.4	May	6.034	-17.0	Mar	72.78	-0.05
May	10.110	-13.0	Jul	6.092	-16.2	Jun	72.98	-0.06
Jul	10.230	-12.2	Sep	6.186	-15.0	Sep	73.17	-0.06
Aug	10.240	-11.6	Dec	6.322	-13.2	Dec	73.33	-0.05

Beef Farmers of Ontario | Phone: 519.824.0334 | Fax: 519.824.9101 | Email: markets@ontariobeef.com

ONTARIO STOCKER & FEEDER SPECIAL FALL SALES

Oct 19	8:30 am	Rainy River Cattlemens Sale- Stratton	Stockers, cows and bulls
Oct 19	10:00 am	Algoma Co-op Livestock- Thessalon	Calves - Farm fresh, 60% vaccinated
Oct 19	11:00 am	Denfield Livestock Exchange	Vaccinated Calves & Yearlings
Oct 23	1:00 pm	OLEX	Special Angus Stocker Sale in reg sale
Oct 25	10:00 am	Brussels Livestock	Charolais Influence Calf Sale
Oct 25	11:00 am	Community Livestock Exchange	Quinte Cattlemen's Sale
Oct 25	7:00 pm	Cargill Auction market	Local Calf Sale
Oct 25	7:00 pm	Maple Hill Auctions Ltd	Speckled Park Sale
Oct 26	9:00 am	Keady Livestock	Bruce Peninsula Charolais Calf Producers Sale - Presort

Comments for the week ending October 17, 2024

Fed steers and heifers sold through auction markets this week at 224 head, were down 38 head from the previous week and 171 head smaller than the same time last year. Fed steers sold from \$235.86-\$250.38/cwt averaging \$242.46/cwt, up \$6.31/cwt from the previous week's trade and \$8.69/cwt above year ago prices. Fed heifers sold from \$231.20-\$245.65/cwt averaging \$238.08/cwt, up \$8.10/cwt from last week and \$10.23/cwt higher than last year. Auction markets reported after the Thanksgiving holiday, fed steers and heifers sold actively at prices \$3.00-\$5.00 higher on Tuesday October 15th. Fed cows sold on a good demand \$1.00-\$2.00 higher.

In Ontario, dressed sales have been reported at \$406/cwt delivered, fully steady with the previous week. Ontario fed steer prices have moved sideways for the last five weeks. Eastern Canadian processing is down 13% YTD with steers down 9% and heifers down 10%, cows down 25% and bulls down 38%. For the week ending October

12th, Eastern processing was 18% above year ago levels and 10.4% above the five-year average. For the week ending October 5th, Eastern fed cattle and cow exports to the US were 2,665 head, 4% above last year and 26% above the five-year average. YTD exports are up 31% from last year. Eastern Canadian cow processing continues to run below a year ago.

Cull cow receipts sold through auction markets this week were 1,636 head, up 16 head from last week but down 1,031 head from last year. Cows were selling from \$124.31-\$180.57/cwt averaging \$147.71/cwt, up \$4.23/cwt from last week and up \$34.65/cwt from last year. Beef cow prices sold from \$126.49-\$183.11/cwt averaging \$155.20/cwt, up \$2.78/cwt from the previous week's trade and \$30.55/cwt above year ago prices. Auction markets reported cows sold actively with prices \$5.00 higher on October 15th. Light receipts of cows sold actively at steady to higher prices

Slightly lighter receipts of 6,258 stockers and feeder cattle sold through Ontario auction markets this week up 2,053 head from the previous week but 2,946 head fewer than the same week last year. Auction markets reported last week that stockers continued to sell at strong prices. After the Thanksgiving holiday, all classes of stockers and feeder cattle sold fully steady. On October 16th, stockers sold aggressively at strong prices. Actual average prices collected this week saw steers from 400-500 lbs trading \$16.12/cwt higher than last week on average, 500-600 lbs up \$9.68/cwt, 600-700 lbs down \$0.16/cwt, 700-800 lbs up \$16.61/cwt, 800-900 lbs were up \$8.30/cwt, steers 900-1000 lbs down \$4.78/cwt and steers 1000 lbs plus averaged \$0.62/cwt weaker than the previous week's weighted average prices. Heifers from 300-400 lbs were up \$15.52/cwt from last week on average, 400-500 lbs down \$5.71/cwt, 500-600 lbs up \$4.05/cwt, 600-700 lbs down \$12.18/cwt, 700-800 lbs up \$5.55/cwt, 800-900 lbs up \$12.43/cwt and heifers 900 lbs and over averaged \$24.18/cwt stronger than the previous week's weighted average prices.

The Quebec electronic market this week sold at \$403.00/cwt dressed on a picked-up basis, which is fully steady from the previous week's trade on average.

Alberta fed trade last week saw light trade develop with dressed sales reported from \$405-408/cwt delivered, steady to \$3/cwt higher than the previous week. The Alberta fed cash-to-futures basis was reported at -\$17.29/cwt, the weakest since March. For the week ending October 13th, Canadian fed cattle shipments to the US totaled 10,775 head compared to 6,087 head during the same week last year. The only class of cattle seeing larger processing receipts than last year is Western Canadian heifers, with YTD receipts up 1% at just over 666,000 head. Alberta direct cattle sales on October 16th saw light trade develop with dressed sales ranging from \$403-405/cwt delivered, \$2-3/cwt lower than the previous week. Asking prices are starting out at \$412/cwt delivered. Canadian beef exports for the month of August were 2% lower than last year. YTD Canadian beef exports are 2% larger than last year.

The U.S. cash cattle trade last week saw live sales in the Northern feeding states from \$187-188/cwt while Southern regions traded from \$186-187/cwt, steady to \$1/cwt stronger than the previous week. Dressed sales in the North were at \$296/cwt, fully steady. On October 17th, buying interest improved, live sales in Kansas have been reported up to \$188/cwt, \$1/cwt higher than the previous week. In Nebraska dressed bids of \$296/cwt, have been noted, bids are fully steady. The All-fresh beef retail price for the month of September was reported at \$8.21/lb, a new all-time high. The USDA WASDE Report revised U.S. beef production for 2024 up from their September estimate, to be steady with a year ago.

For the week ending September 28th, US beef cow processing totaled just over 54,000 head, 24% below last year. Choice cutouts staged a weeklong rally last week, climbing 3.5% from the previous week to close just shy of \$310/cwt. Select cutouts also trekked higher, ending the week 2.5% higher than previous week, pushing toward \$291/cwt. Trims and grinds were wide ranging; 73% ground beef moved 3.5% higher, 90% trim was up a slight 0.5%, but 50% fatty trim eased 2% lower. Fifty percent trim was within \$15/cwt on its annual low last week. USDA released its World Supply and Demand report the other day. US corn production is forecast at 15.2 billion bushels, up 17 million from last month on a 0.2-bushel increase in yield to 183.8 bushels per acre. Corn futures moved lower on the news. USDA revised corn exports 25 million bushels higher. Since early October, the December corn contract has dropped nearly 30 cents per bushel.